

THE SWEETWATER III

2442 Sq. Ft.

 4-5
beds

 2-4
baths

 1
powder

 3-4
car garage

Featured Elevations



Elevation U



Elevation V



Elevation W



History Maker Homes reserves the right to make any changes or discontinue any program, campaign or incentive without notice or obligation. Homes and community information , including pricing, included features, terms, availability and amenities are subject to change at any time without notice. Renderings, drawings, pictures, photographs, videos, square footages, floorplans, elevations, features, colors and sizes are approximate for illustrations purposes only and will vary from the built homes. Home prices refer to the base price of the house and do not include options or premiums, unless otherwise indicated for a specific home. Incentives and seller contributions may require the use of certain lenders or title companies, some of which may be associated with History Make Homes. Not all people will qualify for all offers. Promotional offers are typically limited to specific homes and communities and are subject to terms and conditions. Please visit a History Maker Homes sales consultant for additional incormation, disclosures and disclaimers.





Elevation G



Elevation GS



Elevation H



Elevation HS



Elevation J



Elevation JS



Elevation K



Elevation KS



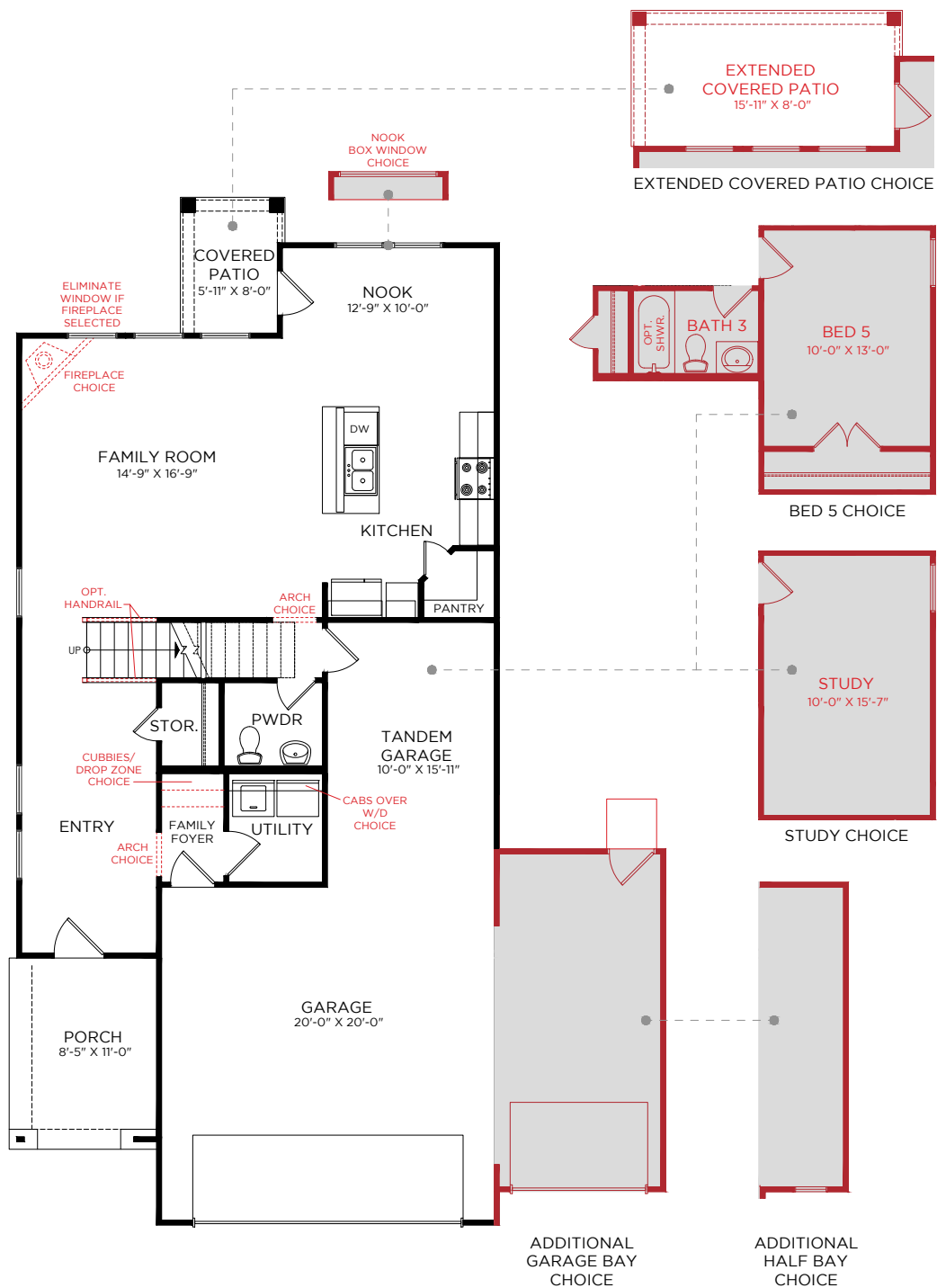
Elevation US



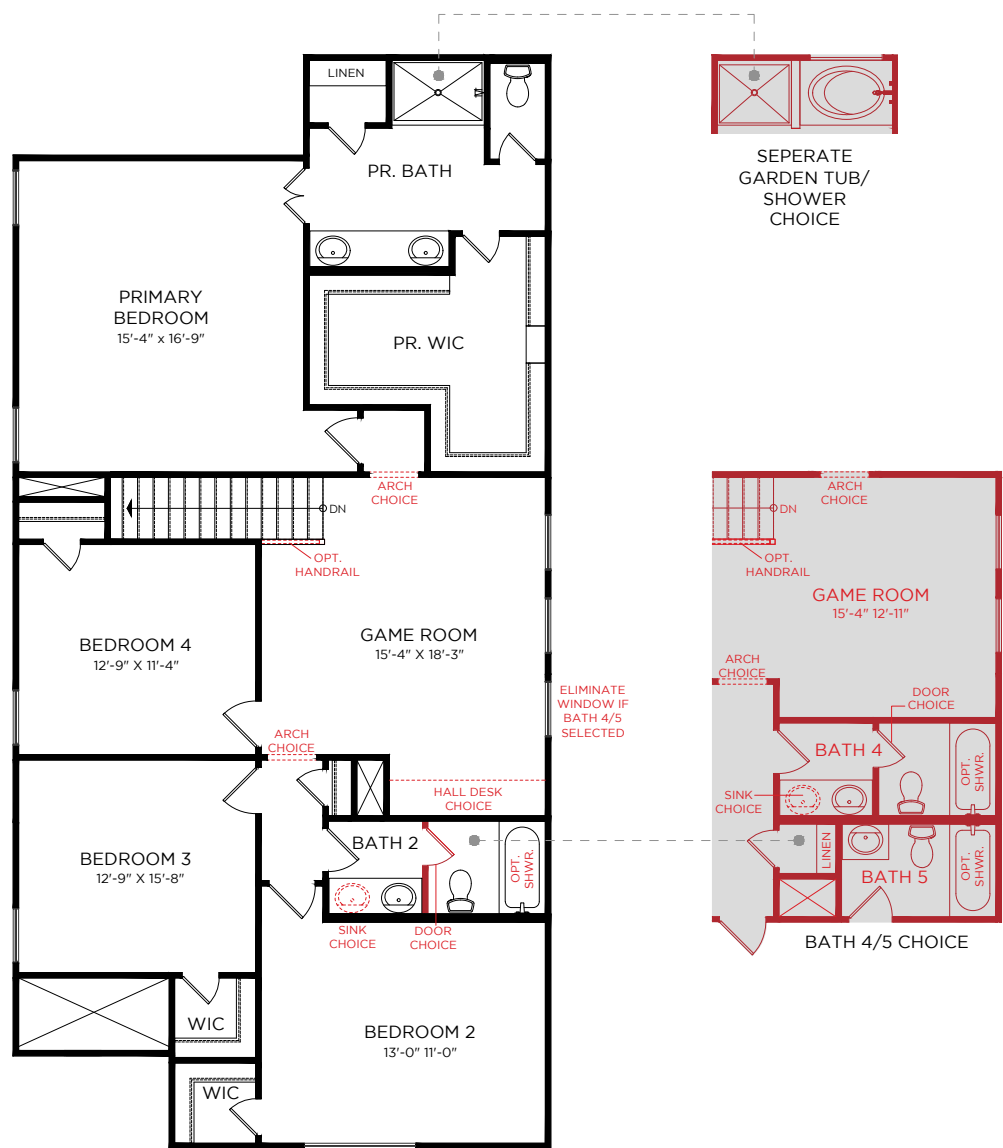
Elevation VS



Elevation WS



FIRST FLOOR



SECOND FLOOR