

THE GLADEWATER

2,039 Base Square Feet



3
beds



2-3
baths



1
powder



2-3
garage

Highlights

2 Story • Open Kitchen Layout with Large Island • Primary Suite on SF with Walk-In Closet
Game Room on SF • Additional Bath Option on SF

Featured Elevations



Elevation HS



Elevation W

Elevation V

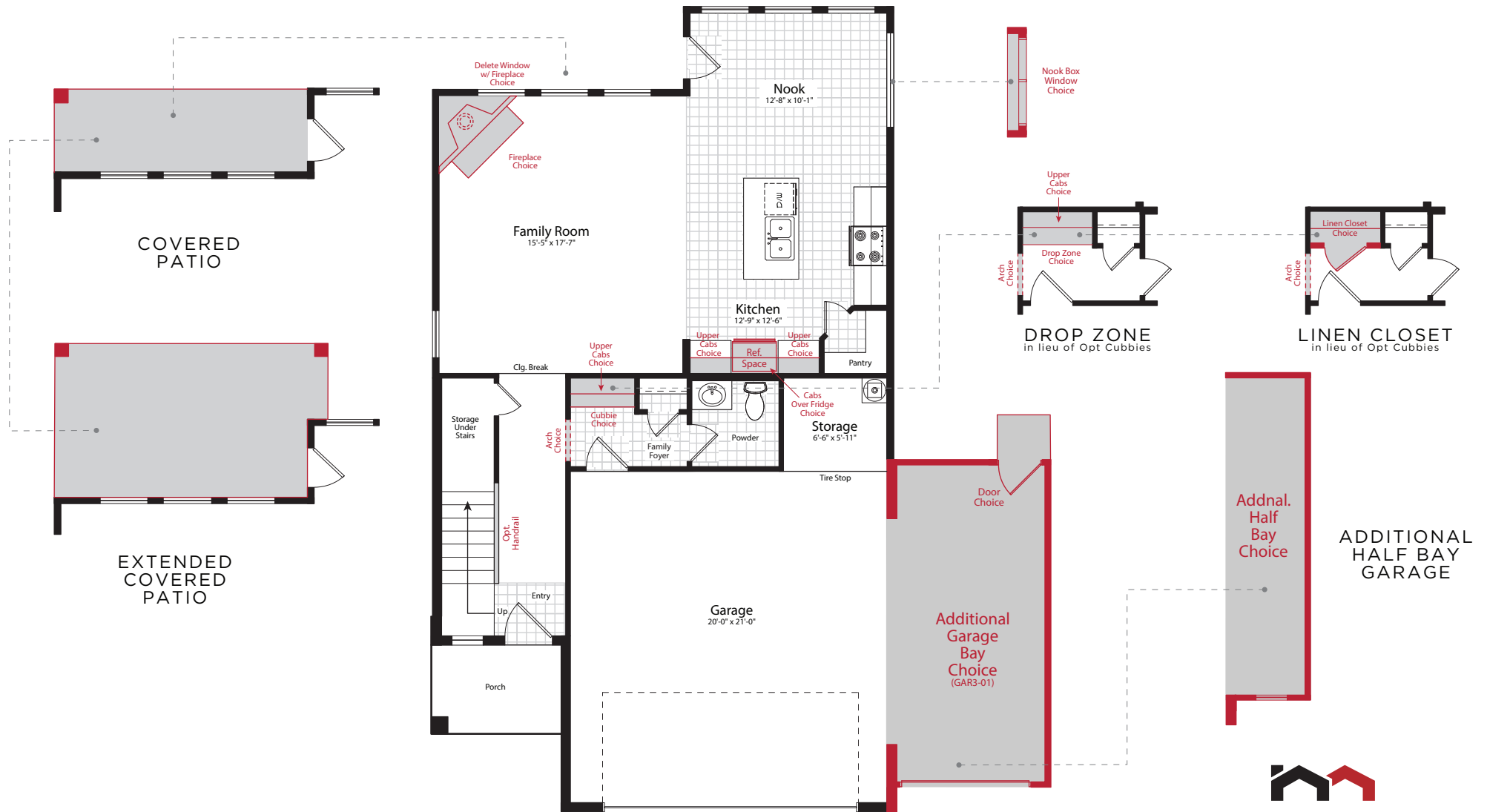
Elevations are thoughtfully tailored to each community.

To view our full offering of available elevations, visit historymaker.com

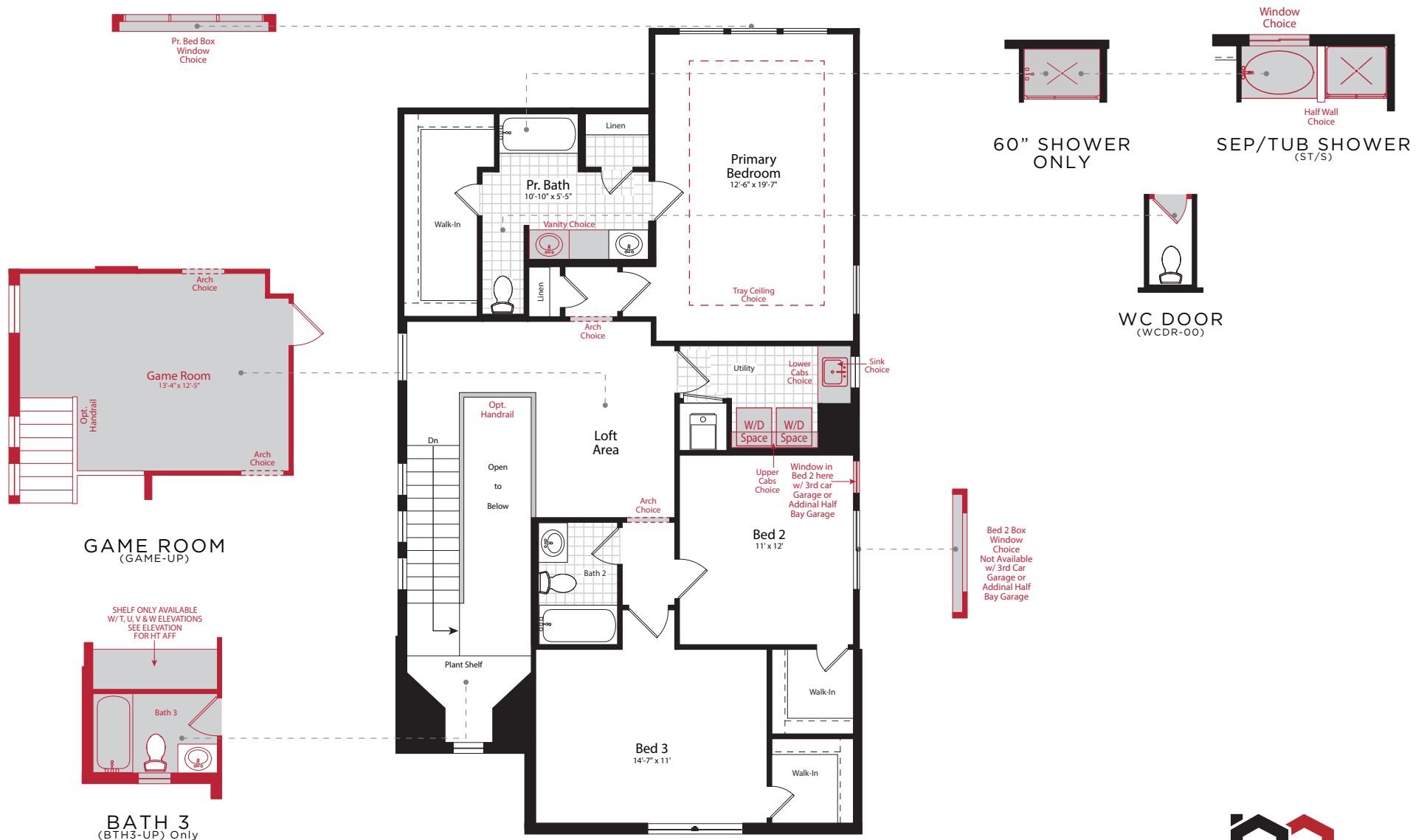
For more information, call a new home consultant at 866.409.1949 (DFW) or 866.419.1949 (HOU)

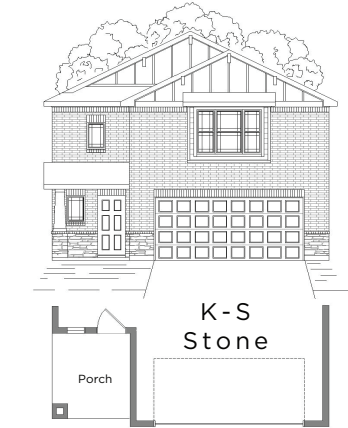
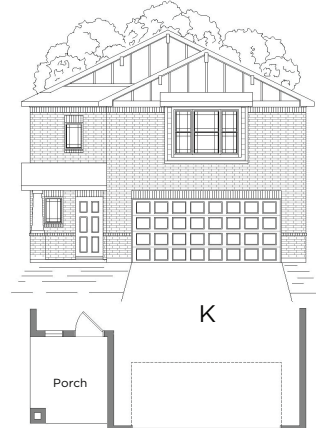
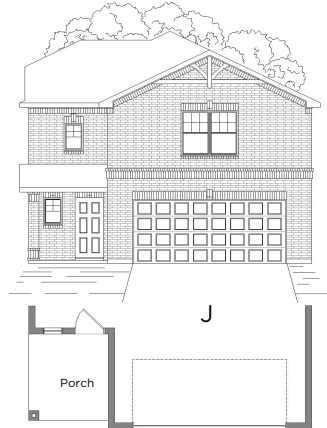
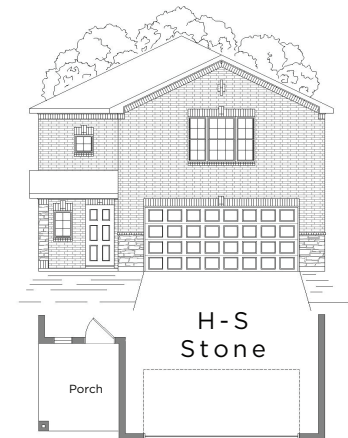
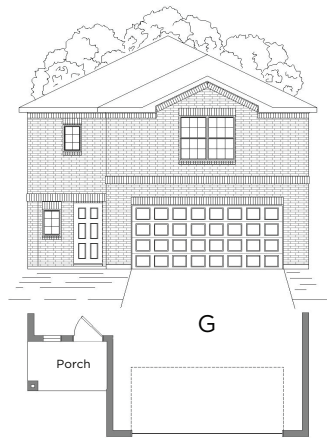


THE GLADEWATER | FIRST FLOOR

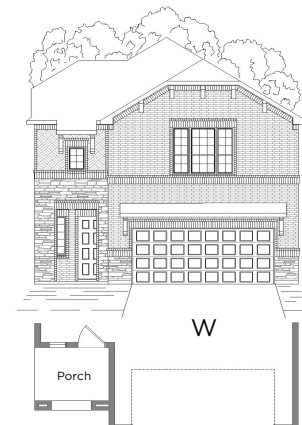
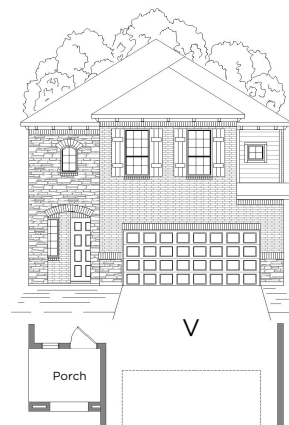


THE GLADEWATER | SECOND FLOOR





Continued...



Notes



Home and community information, including pricing, included features, terms, availability and amenities, are subject to change and prior sale at any time without notice or obligation. Drawings, pictures, photographs, video, square footages, floor plans, elevations, features, colors and sizes are approximate for illustration purposes only and will vary from the homes as built. Images do not reflect a racial or ethnic preference. Home prices refer to the base price of the house and do not include options or premiums, unless otherwise indicated for a specific home. Nothing on our website should be construed as legal, accounting or tax advice. Incentives and seller contributions may require the use of title companies or certain lenders, some of which may be affiliates of HISTORYMAKER Homes, and could affect your loan amount. Not all people will qualify for all offers. Promotional offers are typically limited to specific homes and communities and are subject to terms and conditions. Plans, elevations, dimensions, and treatments may vary between communities. Please consult a HISTORYMAKER Homes sales agent and review a home sales contract for additional information, disclosures and disclaimers.

