

MUSTANG MEADOWS

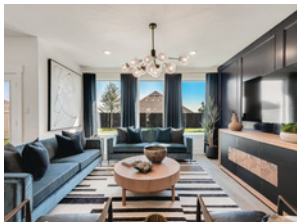
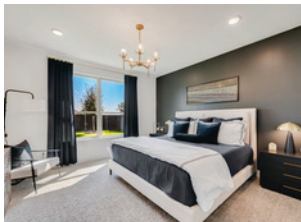
WALLER, TX



Coming Soon

Discover Mustang Meadows in Waller, TX, where affordability meets convenience in a community that offers both tranquility and access to everything you need. Mustang Meadows offers a variety of thoughtfully designed floor plans, allowing you to select the perfect home that suits your needs. Whether you prefer to customize your dream home or need a quick move-in option, there's a selection of homes ready to fit your lifestyle. Explore the flexibility of choosing from different layouts to create a living space that reflects your style and preferences.

- Quick access to major employment centers in Cypress, Katy, Tomball and Houston
- Conveniently located off of hwy 290 with close proximity to HEB and major box retailers
- Close to outdoor recreation at Zube Park, Trail at Cochran, Jellystone Park, and Sand Hill Farm golf course



AMENITIES

Playground | Pond | Walking Trails | Covered Pavillion

HOA FEE | \$600/Annually

TAX RATE | Harris County 3.31%
Waller County 3.20%

WALLER ISD

Holleman Elementary
Waller Junior High
Waller High School



SCAN TO JOIN
OUR VIP
INTEREST LIST

*This information is summary in nature and believed correct at time of publication. Pricing, features, plans, terms, availability, specifications, amenities, promotions and/or incentives and community or neighborhood information are subject to change without notice or obligation. Home prices refer to the base price of the house and do not include options or premiums, unless otherwise indicated for a specific home. Stated dimensions, square footage, floorplans, elevations, colors and homesite sizes are approximate and should not be used as a representation of any home's or homesite's estimated or actual size, location or orientation and are subject to change without notice. Not all features and options are available in all homes. Drawings, photographs, pictures, video and/or renderings used reflect illustrative concepts and are for illustrative purposes only and will vary per home and/or community. Community maps, illustrations, plans and/or amenities reflect our current offering and are subject to change without notice. Maps may not be to scale. Photographs or renderings of people do not depict or indicate any preference regarding race, religion, gender, sexual orientation, disability, familial status, or national origin. No guarantee is made regarding any particular area public school or school district or that any particular public school or school district will service any given community and is subject to change at any time. Marketing promotions and/or incentives, if any, are subject to conditions or restrictions and are subject to change without notice. Promotional offers are typically limited to specific homes and communities and are subject to terms and conditions. Nothing on our website should be construed as legal, accounting or tax advice. Incentives and seller contributions may require the use of certain lenders or title companies, some of which may be a licensee of HISTORYMAKER Homes, and could affect your loan amount. Additional restrictions may apply. See a HistoryMaker Homes sales counselor or agent and review a home sales contract for additional information and complete details, disclosures and disclaimers. © 2025 HistoryMaker Homes. All rights reserved.

